



QUICK START USER MANUAL

KINGFISHER DELUXE
UNDERCOUNTER GLASS & DISHWASHERS

INTRODUCTION

Welcome to your new Kingfisher Deluxe Warewasher.

This model refers to more than one type of unit in the range. For reference, refer to the product specifications overleaf to identify your appliance.

Unpacking & Positioning

- ⚠ This appliance is not designed to be moved by hand from area to area. It must be moved into position on a pallet with a forklift or other suitable lifting equipment before unboxing.
- ⚠ Upon unwrapping, inspect the machine for damage immediately. If any issues are noticed, please contact the retailer directly.
- ⚠ Read this user manually carefully, particularly installation instructions overleaf before attempting to use or operate the machine.

Safety Instructions

- ⚠ Do not use the appliance in areas without sufficient lighting.
- ⚠ Do not touch moving parts of the appliance whilst it is in operation.
- ⚠ Do not install or use the appliance in the presence of flammable or explosive materials.
- ⚠ Do not operate the appliance when it is not connected to a water supply
- ⚠ This appliance must be earthed in accordance with local regulations. All damage caused by use when not earthed will not be covered under the warranty.
- ⚠ If for any reason there is a malfunction of the appliance which causes a leak of water, ensure that the electrical supply is switched off at the plug/circuit breaker immediately before touching the appliance.
- ⚠ In the event of a malfunction of the appliance which causes fire or smoke, switch off the electrical supply at the plug/circuit breaker immediately. Do not use water to extinguish and instead use a fire extinguisher suitable for electrical fires.

 **For further assistance, please call our UK service partner on 01279 876 500 or write an email to service@buzzsupplies.co.uk**

PRODUCT SPECIFICATIONS

Model	Dimensions (mm)	Weight (kg)	Packaging Dimensions
KF500	590x700x820	67	725x650x970

Technical Information

Product Code	KF500
Basket Dimensions	500x500mm
Total Power	3kw
Motor Power	0.55kw
Boiler Heating	2.5kw
Tank Heating	2.5kw
Operating Voltage	230v
Fuse Rating	13A
Water Pressure	2-4 bar
Program Timer	90, 120 or 180 seconds
Drain Pump	Yes

GENERAL INFORMATION

Before installing or using the appliance, read this quick start user manual carefully. Incorrect installation of the machine may damage the product, cause injury to people and invalidate your warranty. The company is not responsible for damage to the appliance because of incorrect use, negligence, wrong connections etc.

1. This instruction manual should be kept in a safe place for future reference
2. Installation should be made by a qualified service engineer
3. Please check for local regulations and rules about proper use & connection
4. The appliance is designed for commercial use & operation by trained personnel only
5. In the event of a malfunction or failure, turn off the appliance immediately
6. The appliance should only be repaired by authorised service personnel.



For further assistance, please call our UK service partner on 01279 876 500 or write an email to service@buzzsupplies.co.uk

INSTALLATION

All Kingfisher Deluxe glass washers & dishwashers are supplied with the following:

1. 3 pin 13amp UK Plug (Pre-Installed)
2. Drain Hose (Pre-Installed)
3. Water Inlet Hose (Not Installed)
4. Detergent Intake Pipe (Pre-Installed)
5. Rinse Aid Intake Pipe (Pre-Installed)
6. Baskets (3)
7. Feet (4)

▲ IMPORTANT

Please take care when unpacking the unit as the feet do not come pre-installed. Ensure these are installed on to the unit **BEFORE** moving to the location you are installing to. Once in place ensure unit is level, left to right, front to back as if not this can affect the running of the machine.

Connecting the Water Supply

The mains water hose will be supplied with the unit and located in the wash tank (Seen when retrieving the feet in the previous step). Connect one end of the hose to the Inlet valve on the unit, ensure to **NOT** cross thread when screwing on to the unit. Once it has been connected tightly connect the other end of the hose to your mains water supply or water softener where applicable.

▲ Please Note: medium to hard water areas must be connected to a water softener. Failure to do so could damage your machine, cause poor wash results and invalidate your warranty. Scan the QR code to find out more about water quality in your area.



Connecting The Waste Outlet

The grey ribbed waste hose will need to be connected to your waste outlet.

All Kingfisher deluxe machines are fitted as standard with a drain pump. However, you must ensure the waste outlet is not higher than three quarters of the height of the unit as this will prevent the pump from operating correctly. **Using an upstand is preferred, as a spigot will reduce the flow rate and may result in dirty water flowing back into the unit.**

Connecting To Electrical Supply

All machines, unless otherwise specified, are 13amp 3 pin Plug. Ensure the unit is connected to a dedicated socket with no other items that use an element on the ring.

DO NOT USE AN EXTENSION LEAD OR DOUBLE PLUG.

Connecting To Chemicals

All units will come supplied with automatic chemical dosing pumps fitted internally to the machine. The pickup for these are the two pipes at the rear of the machine.

CLEAR: for glasswash or dishwasher detergent
GREEN or BLUE: for rinse aid

⚠ Please Note: If the unit has 2 clear pipes fitted, there will be stickers to indicate which pipe is used for which stuck to the back of the machine where the pipe exits.

RECOMMENDED CHEMICALS 

Wash results and machine longevity can be highly dependant on the quality of chemicals used. Kingfisher has been tested with and always recommends the use of EntirePro.

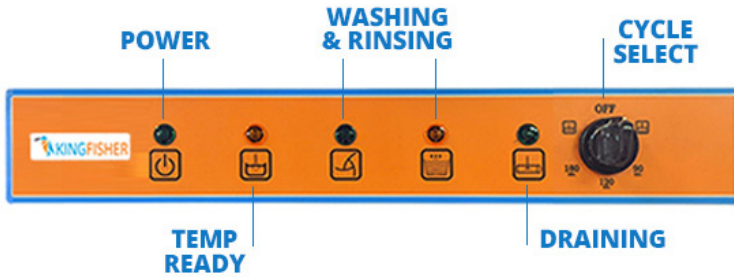
It is always advisable to make a small hole in the lid of the chemicals and feed the tube through, you will need to remove the weight and filter before doing so, re attach this when the tube has gone through the lid, screwing the lid back on to the chemical bottle. Ensure the chemical dosing tube has been fed through, so it is at the bottom of the bottle. This is to prevent Oxidisation of the chemicals and provide a longer shelf life.

First Use

1. Ensure the power is on at the socket, the power light on the front unit will illuminate
2. Make sure that the Water valve has been turned on/Water softener is open to the machine
3. You are now ready to begin using the unit.
4. Turn overleaf for operating instructions.

OPERATION

Control Panel Overview



Filling the machine

1. Using the Black Dial on the right hand side. Turn to **position 1**.



2. The unit will then **fill with water**, after a short while this will stop at the required level and automatically start to **heat the boiler and tank**. This will take between **45-60 mins**.

The chemicals will have already dispensed via the internal pumps. Do not add any additional chemicals to the wash tank: such as washing up liquid or extra detergent/rinse aid.

3. When both tanks are heated to their correct temperatures, the temperature indicator will illuminate to confirm the machine is ready to use. **Do not wash until it is fully heated.**

Wash Tanks: 55 - 65 °C

Boiler: 75 - 85 °C

Starting a wash cycle

1. Ensure that all items receive a **pre rinse** before going through the wash cycle. This is to ensure no grease/grime or excess food stuff goes into the wash tank.
2. Place the items in the basket ensuring there is nothing poking through the holes in the basket that may interfere with the bottom wash/rinse arm rotation.
3. Close the door and turn the Black Dial to **Position 2, 3 or 4** for your preferred wash cycle.



4. The unit will perform the **wash cycle** and then a small **rinse cycle**.
5. Open the door and remove the tray, closing the door to ensure there is minimal loss of heat **DO NOT PUT THE TRAY ON TOP TO DRIP DRY** as this can cause electrical problems.

Draining and end of day cleaning

1. When the machine requires to be emptied, generally at the end of the day, remove the tray and **release the overflow** ensuring the filter remains in place until all water has drained.
2. Turn the black dial to **position 5**.



3. The **drain pump will start** and water will begin to empty from the tank going through the drain pipe to your external waste pipe. It may be necessary to perform this procedure more than once should there is residual left over.
5. Once emptied, ensure you complete your daily/monthly cleaning procedure.

Maintenance

General Tips

Drain & replenish the water in the water tank at least once a day. You may need to do this more regularly if it becomes dirty during operation.

Before putting dishes into the appliance, we advise that you prewash them by rinsing with cold or warm water over a sink. This helps to remove any residual food debris.

Do not pre-wash with soaps or washing up liquid as residual can contaminate the wash water inside the tank.

Daily Cleaning & Maintenance

Always turn off the appliance and disconnect the power supply for cleaning.

Drain dirty wash water by removing the plug and utilising the drain pump.

Remove and clean the tank filters by washing and rinsing them in the sink. This helps to prevent debris build up and ensure efficient cleaning.

Clean the wash chamber with a hot soapy water solution, before rinsing and then drying with a clean cloth. Do not use abrasive cleaning chemicals.

Wipe down external surfaces with a damp cloth and mild cleaning solution. Do not clean the control panel by spraying water directly, otherwise this can cause damage to the electrical components.

Check detergent levels to ensure that the machine is not operated without appropriate supply of detergent and rinse aid.

Weekly Maintenance

Check and replenish your water softener to ensure optimal water quality. We recommend this is done weekly, but frequency may be increased if you notice limescale build up inside the washing chamber.

Inspect and clean washer jets by unscrewing the wash arms and nozzles and flushing through with clean water. If they are blocked with limescale, soak in a descaler solution to clean.

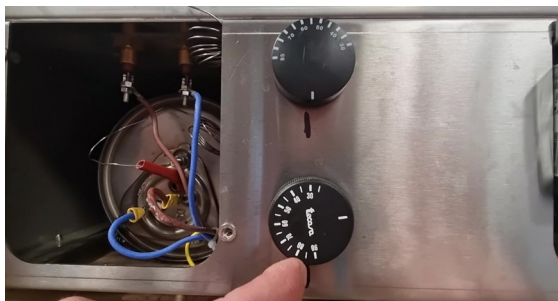
Monthly Maintenance

Descal the dishwasher. Let the machine fill up and heat then add an appropriate dilution of catering descaler solution. Leave for 5 minutes then run 3 wash cycles without anything in the machine. Once complete, drain down and flush with fresh water to remove any residue.

Front Service Panel

Commonly configurations can easily be changed by the user underneath the front service panel. This can be removed by unscrewing the two screws located at the bottom front of the machine. Scan the QR code to watch the video of each below:

Temperature Control Settings:



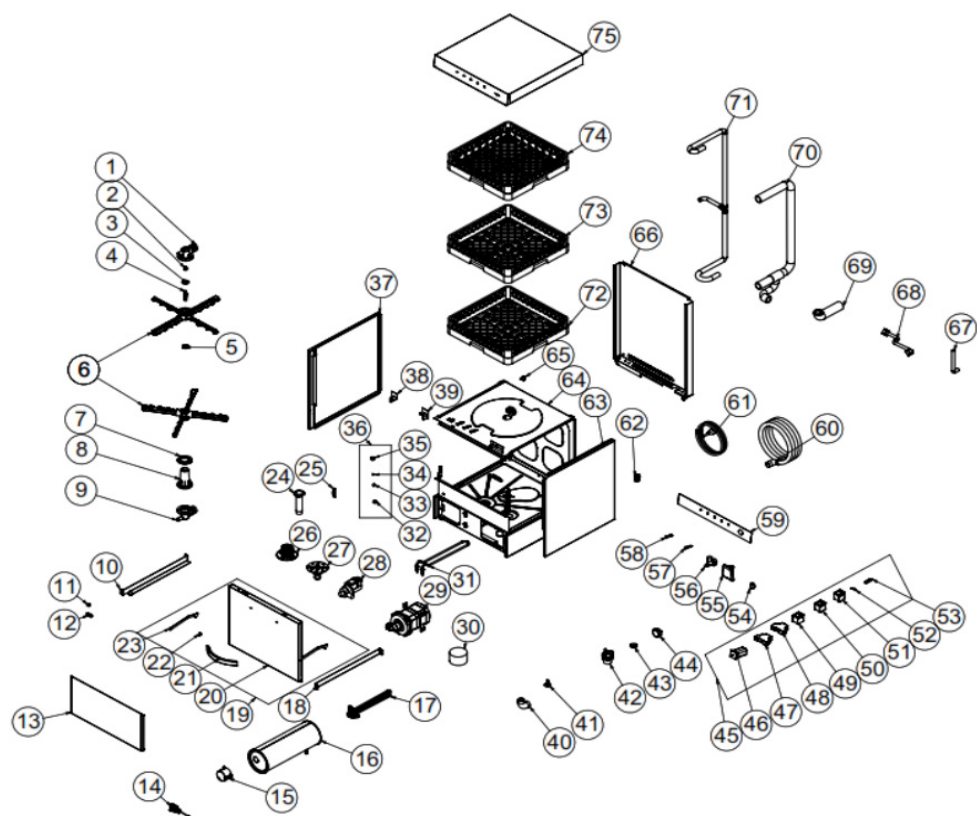
<https://youtu.be/ogs8bljPP6A>

Detergent/Rinse Aid Dosing Settings:



<https://youtu.be/S2LVhBQ71lw>

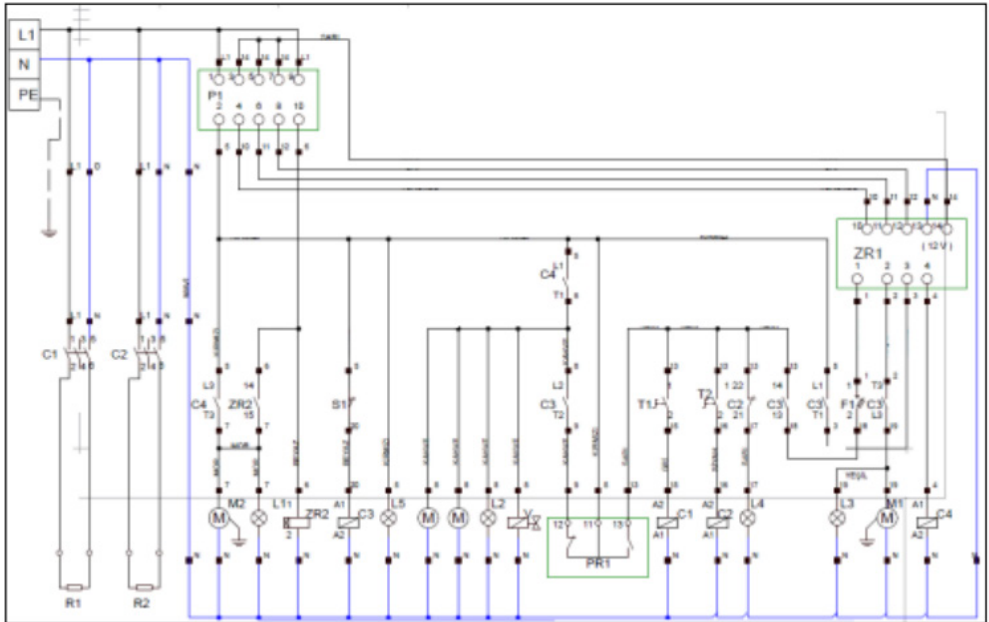
Spare Parts List



NO	PRODUCT NAME	P. CODE
1	HOSE UPPER ELBOW	M.ENJ-ERS-PLS-BYM-097
2	CENTER BUSH	YTL-ERS.BYM-KS-0014
3	PRESSURE PLASTIC	M.ENJ-ERS-PLS-BYM-059
4	SPINNING SPINDLE	YTL-ERS.BYM-KS-0001
5	SPRAY SCREW	M.ENJ-ERS-PLS-BYM-070
6	FOUNTAIN	M.ENJ-ERS-PLS-BYM-053
7	SPRAY GASKET	M.ENJ-ERS-LST-019
8	LOWER FOUNTAIN CENTER	M.ENJ-ERS-PLS-BYM-020
9	HOSE LOWER ELBOW	M.ENJ-ERS-PLS-BYM-096
10	RIGHT SLIDE SHEET	YSC-ERS.BYM-LZ-0005
11	MAGNET	M.MIK-ERS-001
12	MAGNET LOCATION	M.ENJ-ERS-PLS-BYM-001
13	BOTTOM COVER SHEET	YSC-ERS.BYM-LZ-0452
14	THERMOSTAT 0-90°C	M.ELK-MEK-TRM1-008
15	RESISTANCE COVER	M.ENJ-ERS-PLS-BYM-025
16	BOILER TANK	M.MEK-TES-BYM-BYL-001
17	BOILER RESISTANCE 220V-5000W	M.ELK-RZS-BRU-BYM-030
18	LEFT SLIDE SHEET	YSC-ERS.BYM-LZ-0004
19	COVER	ARA-ERS.BYM-0012
20	COVER OUTER SHEET	YSC-ERS.BYM-PN-0344
21	COVER HANDLE	ERS.M.AKS-KLP-INX-003
22	SLEEVE PART	YTL-ERS.BYM-KS-0119
23	TOP COVER HANDLE	YSC-ERS.BYM-LZ-0455
24	DRAIN WEDGE	M.ENJ-ERS-PLS-BYM-016
25	WEDGE PLASTIC	M.ENJ-ERS-PLS-BYM-017
26	FILTER COVER	M.ENJ-ERS-PLS-BYM-086
27	DISCHARGE WEDGE LOCATION	M.ENJ-ERS-PLS-BYM-112
28	DRAIN PUMP	M.ELK-MTR-PMP-002
29	WASHING MOTOR	M.ELK-MTR-PMP-001
30	FILTER	M.ENJ-ERS-PLS-BYM-041
31	TANK RESISTANCE 230V-2500W	M.ELK-RZS-BRU-BYM-028
32	LOCK KIT SPRING PLACE	YTL-ERS.BYM-KS-0073
33	COVER LOCK SPRING	M.YAY-ERS-035
34	BALL	M.MUH-021
35	LOCK BODY	YTL-ERS.BYM-KS-0072
36	COVER LOCK	ARA-ERS.BYM-0013

38	CORNER PLASTIC RIGHT	M.ENJ-ERS-PLS-BYM-061
39	CORNER PLASTIC LEFT	M.ENJ-ERS-PLS-BYM-062
40	WASHING PUMP HOSE	ERS.M.MEK-TES-HRT-014
41	FOOT	M.AKS-AYK-INX-004
42	FILTER LOCATION	M.ENJ-ERS-PLS-BYM-018
43	FILTER NUT	M.ENJ-ERS-PLS-BYM-113
44	PROCESTAT FLOAT	M.ELK-MUH-001
45	ELECTRICAL PANEL GROUP	M.ELK-PNO-BYM-001
46	SWITCH	M.ELK-SLT-PKO-011
47	evacuation time relay	M.ELK-KNT-ROL-026
48	WASH TIME RELAY	M.ELK-KNT-ROL-020
49	LC1K0901M7 CONTACTOR	ERS.M.ELK-KNT-KNT-020
50	CONTACTOR LC1K0910M	ERS.M.ELK-KNT-KNT-021
51	LC1K1210M7 CONTACTOR	ERS.M.ELK-KNT-KNT-022
52	GLASS FUSE 5A	M.ELK-SGR-011
53	HORIZONTAL SENSOR	M.ELK-SWC-KTG-005
54	SWITCH BUTTON	ERS.M.AKS-DGM-MUH-001
55	AIR TRAP	M.ENJ-ERS-PLS-BYM-019
56	VALVE (14 LT)	M.ELK-SLN-PLS-001
57	GREEN WARNING LAMP	ERS.M.ELK-LMB-SNY-001
58	YELLOW WARNING LAMP	ERS.M.ELK-LMB-SNY-003
59	PANEL LABEL	M.AKS-ETK-LKS-ERS-BYM-014
60	WASTE WATER HOSE	M.MEK-TES-HRT-033
61	3*2.5 MM CABLE	HEL-KB-TT-3*2.5-SYH
62	PG-16 CABLE FITTING	M.ELK-RKR-PLS-004
63	LEFT SIDE SHEET	YSC-ERS.BYM-PN-0346
64	CHASSIS	-
65	DETERGENT ENTRY PLASTIC	M.PLS-ERS-036
66	BACK COVER SHEET	YSC-ERS.BYM-PN-0010
67	VALVE HOSE	ERS.M.MEK-TES-HRT-006
68	HOSE 150CM	ERS.M.MEK-TES-HRT-011
69	PUMP HOSE	ERS.M.MEK-TES-HRT-002
70	WATER INLET HOSE	M.MEK-TES-HRT-001
71	SPRAY DISTRIBUTION HOSE	M.MEK-TES-HRT-003
72	PLATE BASKET	EMP.TB.01
73	SPOON FORK BASKET	EMP.KC.01
74	GLASS BASKET	EMP.BB.01
75	TOP COVER SHEET	YSC-ERS.BYM-LZ-0448

Electrical Circuit Diagram



P1	5 PHASE PROGRESSIVE COMMUTATOR
S1	MAGNETIC DOOR SENSOR
C1	BOILER CONTACTOR 220V
C2	WASHING CONTACTOR 220V
C3	LID CONTACTOR 220V
C4	RINSING CONTACTOR 220V
L1	EVACUATION LAMP
L2	RINSING LAMP
L3	WASHING LAMP
L4	WATER IS HEATED LAMP
L5	START LAMP
T1	BOILER THERMOSTAT (30-90°C)
T2	WASHING THERMOSTAT (30-90°C)
ZR1	5 CYCLE- CYCLE RELAY (INTER RR-5TG)
ZR2	0-240 SEC. CYCLE RELAY
PR1	PROSSESTAT
M	DETERGENT PUMPS
M1	WASHING MOTOR 0,55 KW 230V
M2	EVACUATION MOTOR 0,44 W 230V
R1	BOILER RESISTANCE 3000W
R2	WASHING RESISTANCE 2500W
F1	LEAKAGE CURRENT SAFETY FUSE
F2	ZR1 FUSE 500MA
V	SOLENOID VALVE 220V
TR1	WASHING MOTOR SAFETY RELAY
TR2	EVACUATION HOSE SAFETY THERMIC

Warranty & Repair

Warranty repairs must only be conducted by authorised service personnel. For more information please contact the UK distributor of your machine:

Buzz Supplies Ltd
Unit F, Woodside Ind. Estate
Bishop's Stortford
Hertfordshire
CM23 5RG

T: 01279 876 500

E: Service@buzzsupplies.co.uk

